



## PRODUCT INFORMATION SHEET

This information sheet gives a brief description and examples of the different options for polished concrete finishes. Each option can be finished in a **Matte, Satin or High gloss**.

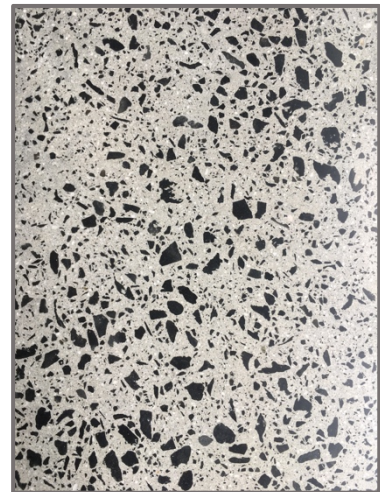
We do not except responsibility for poorly laid concrete, screed lines, cracking, poorly trowelled edges, staining, natural colour variations or any damage caused by others. Please contact us before your pour to discuss concrete recommendations.

### Premium Finish

Full Exposure Premium Finish. The full process is available in PDF form, and is referred to as a Diamond Polished Floor. This finish is far superior to coating systems, and has a much longer lifespan with minimal maintenance.

We grind the slab 5-7 days after the slab has been poured to reveal the aggregate, then cover the floor in a cement based grout. We recommend that the slab is **NOT trowelled too smooth**, as this can effect the ability to achieve an even exposure.

We return to finish the polish before cabinetry and skirting are installed. The ceiling is usually painted, but not the walls.



## **Commercial Finish (Random Exposure)**

Commercial Finish (Random Exposure). The full process is available in pdf form, and is referred to as a Diamond Polished Floor. This finish is far superior to coating systems, and has a much longer lifespan with minimal maintenance.

**With this finish, flatness is the key to achieve an even look. High spots and lumps in the slab will result in a heavier random exposure of stone/fine aggregates.**

We grind the slab 7-10 days after the slab has been poured to flatten the surface to a point it can be polished. We then cover the floor in a cement based grout.



We return to finish the polish before cabinetry and skirting are installed. The ceiling is usually painted, but not the walls.

We recommend that the slab is **TROWELLED SMOOTH** and even. We require a much more dense and consolidated surface for this finish.





## Commercial Finish (Salt & Pepper)

Commercial Finish (Salt & Pepper). The full process is available in pdf form, and is referred to as a Diamond Polished Floor. This finish is far superior to coating systems, and has a much longer lifespan with minimal maintenance.

We **lightly hone** the slab 7-10 days after the slab has been poured to **only remove the trowelled surface to show the sand and cement particles. All efforts will be made to keep the exposure of aggregate to an absolute minimum.** High spots may result in a less consistent exposure of sand and cement particles and give slight colour variations. We then cover the floor in a cement based grout.



We return to finish the polish before cabinetry and skirting are installed. The ceiling is usually painted, but not the walls.

The concrete needs to be finished to a very high standard to achieve a consistent and even polish.

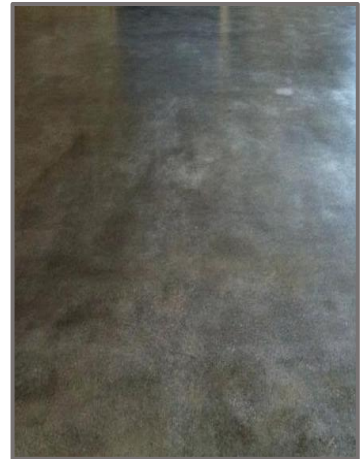
We recommend that the slab is **TROWELLED SMOOTH** and even. We require a much more dense and consolidated surface for this finish.



## Burnished/Industrial (surface polish)

Burnished/Industrial Finish (surface polish). The full process is available in pdf form, and is referred to as a Diamond Polished Floor. This finish is far superior to coating systems, and has a much longer lifespan with minimal maintenance.

**For this process we only polish the trowelled surface.** No material is removed and therefore no imperfections are corrected. This is a very 'characteristic' look, and the concrete needs to be finished to a very high standard to achieve a consistent polish. **Any trowel marks on edges, or slight blemishes in the surface may remain - this is the nature of the 'Burnished' style (some people like this rustic/raw look).**

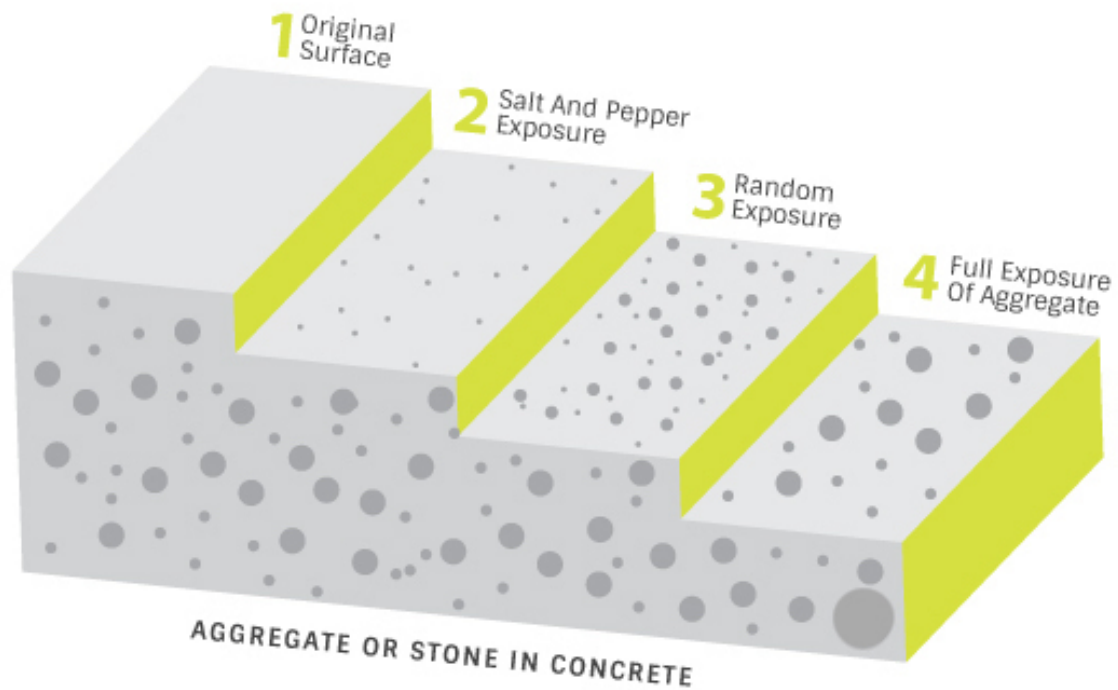


We recommend that the slab is **MACHINE TROWELLED SMOOTH** and even, right to the edges - any 'swirling' or colour variations from the trowelling will remain. This process requires the services of **high quality concretors**. We require a much more dense and consolidated surface for this finish.

This entire process is completed before cabinetry and skirting are installed. The ceiling is usually painted, but not the walls. Additional charges will occur if cabinetry is installed.



## GRINDING STEPS DIFFERENT EXPOSURES OF AGGREGATE



**Please feel free to contact Alistair at Geo Polished Concrete to discuss further or see more photos and example of beautiful Polished Concrete floors.**